

# FOR LEASE

**6512 - 1A STREET S.W.**  
*MANCHESTER INDUSTRIAL DISTRICT*



## PROPERTY DETAILS

UNIT SIZE:	4,971 sq.ft.
LOADING:	1 Dock Door (8 ft x 10 ft)
ZONING:	DC (MU-1)
NET RENT:	\$9.50 psf per year
OPERATING COSTS:	\$6.33 psf per year 5% Management Fee included based on Net Rent
CEILING HEIGHT:	13'9" - 15'2"
HEATING:	Gas fired forced air
POWER:	To Be Verified

- Very Economical Storage/Flex space.
- Available with 60 days notice.
- Steps away from Chinook LRT, Macleod Trail, Glenmore Trail, Chinook Centre Mall.
- The DC zoning allows for the permitted uses of Mixed Use-General (MU1). Further details on page 3.
- The layout is improved with two large vaulted rooms upfront separated by open warehouse area in the rear of bay.
- One bathroom.
- Professionally managed.

GRANT SCHELL  
SCHELL BROTHERS REAL ESTATE CORP.  
C: 403-701-4273  
E: gschell@schellbrothers.ca



MARK SCHELL  
SCHELL BROTHERS REAL ESTATE CORP.  
C: 403-861-1143  
E: mschell@schellbrothers.ca

[www.schellbrothers.ca](http://www.schellbrothers.ca)

# FOR LEASE

6512 - 1A STREET S.W.  
MANCHESTER INDUSTRIAL DISTRICT



GRANT SCHELL  
SCHELL BROTHERS REAL ESTATE CORP.  
C: 403-701-4273  
E: gschell@schellbrothers.ca

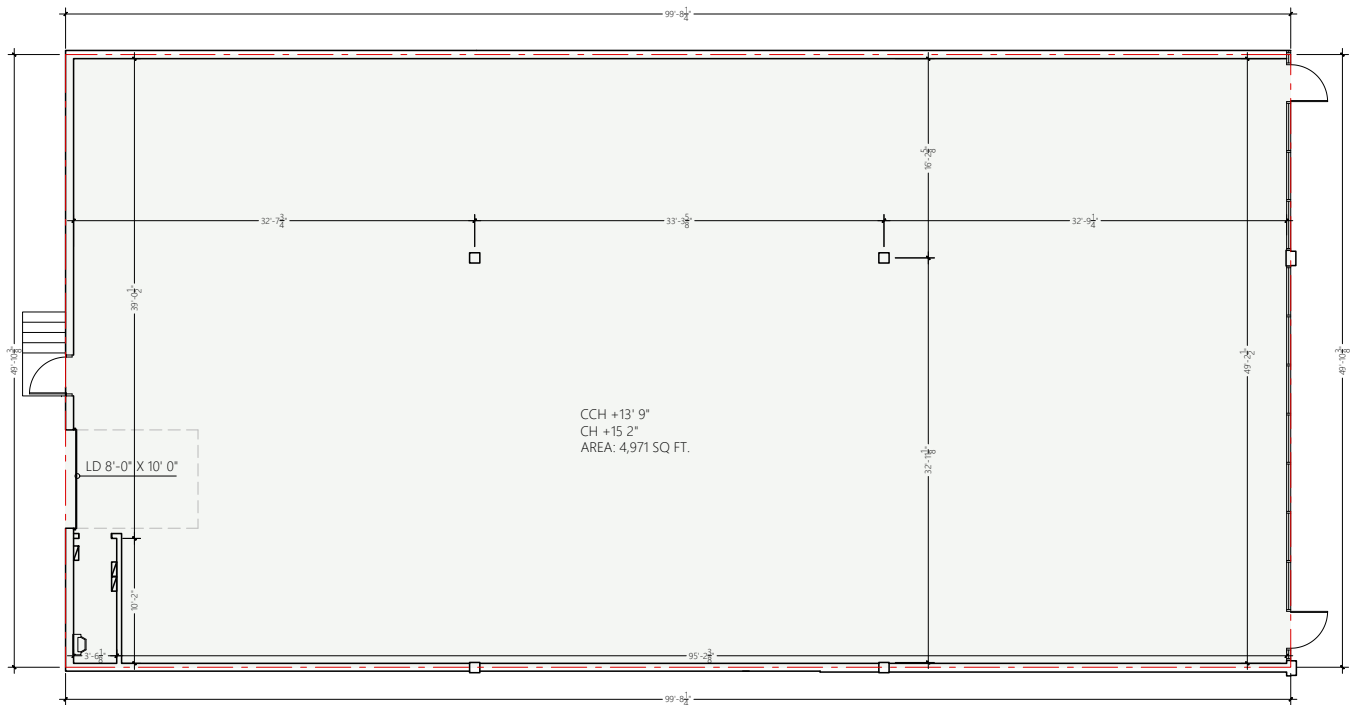


MARK SCHELL  
SCHELL BROTHERS REAL ESTATE CORP.  
C: 403-861-1143  
E: mschell@schellbrothers.ca

[www.schellbrothers.ca](http://www.schellbrothers.ca)

# FOR LEASE

6512 - 1A STREET S.W.  
MANCHESTER INDUSTRIAL DISTRICT



1 MAIN LEVEL

Scale: 1/8" = 1'-0"

## Land Use Bylaw - DC Direct Control 252D2019 - (MU-1)

Subject to City of Calgary Approval, Potential Permitted and Discretionary Uses Include:

Convenience Food Store; Fitness Centre; Pet Care Service; Print Centre; Protective and Emergency Service; Radio and Television Studio; Retail and Consumer Service; Specialty Food Store. Restaurant: Food Service Only; Restaurant: Licensed; Place of Worship - Large; Addiction Treatment; Assisted Living; Brewery, Winery and Distillery; Cannabis Store; Child Care Service; Community Recreation Facility; Computer Games Facility; Custodial Care; Drinking Establishment - Small; Dwelling Unit; Food Production; Home Occupation - Class 2; Indoor Recreation Facility; Kennel; Liquor Store; Live Work Unit; Outdoor Café; Parking Lot - Structure; Place of Worship - Medium; Place of Worship - Small; Post-secondary Learning Institution; Residential Care; Seasonal Sales Area; Signs - Class C; Signs - Class E; Social Organization; Special Function - Class 2; Supermarket; Urban Agriculture; Utility Building; Vehicle Rental - Minor; and Vehicle Sales - Minor.

GRANT SCHELL  
SCHELL BROTHERS REAL ESTATE CORP.  
C: 403-701-4273  
E: gschell@schellbrothers.ca



MARK SCHELL  
SCHELL BROTHERS REAL ESTATE CORP.  
C: 403-861-1143  
E: mschell@schellbrothers.ca

[www.schellbrothers.ca](http://www.schellbrothers.ca)